



YAVAPAI COLLEGE:

STRATEGIC VISION STUDENT PROGRESS AND OUTCOMES REPORT 2016

www.arizonacommunitycolleges.org

YAVAPAI COLLEGE: 2016 STRATEGIC VISION STUDENT PROGRESS AND OUTCOMES REPORT

EXECUTIVE SUMMARY

In 2011, Arizona's community colleges embarked upon a long-term Strategic Vision to significantly increase the number of Arizonans who achieve their postsecondary education and training goals, complete a degree or certificate, and/or transfer to a university. **In order to measure progress toward the three major goals outlined in the Strategic Vision, the colleges have implemented a rigorous self-assessment and accountability process centered around the annual collection and distribution of data related to 28 key indicators.**

Data presented in the 2016 Strategic Vision Student Progress and Outcomes Report identify areas of strength, as well as places where Yavapai College (YC) will need to focus its efforts in order to improve student access, retention, and completion. **For some of the retention and completion measures, a specific group of students called the "Credential-Seeking Cohort" was tracked; this group is defined as full- and part-time learners who earned at least 12 credit hours by the end of their second year.** Tracking this sub-cohort aligns YC's data collection and accountability strategies with those of national community college initiatives such as the Voluntary Framework of Accountability (VFA). Furthermore, analysis of retention and completion outcomes within this sub-cohort provides a more accurate gauge of community college student success, as it takes into account learners' diverse educational and training goals.

The 2016 outcomes presented in this report can be compared to those from previous years, and trends in student progress and outcomes are starting to emerge. However, many external forces (such as the state of Arizona's economy, the actions of other public institutions of higher education, and the availability of funding for community colleges) also affect these trends, making long-term projections difficult at best.

HIGHLIGHTS OF YAVAPAI'S 2016 STUDENT PROGRESS AND OUTCOMES REPORT

Access

- At Yavapai College, the percentages of Pell recipients and learners over the age of 24 meet or exceed statewide and national averages.

Retention

- More than four-fifths of all student credit hours attempted in college-level courses by Yavapai's 2013 New Student Cohort were successfully completed.
- At 75%, Yavapai's fall-to-fall retention rate is substantially higher than the national comparison (53%).

Completion

- Thirty-eight percent of Yavapai learners graduate within six years; this number is substantially higher than both statewide (29%) and national (25%) averages).
- Eighty-five percent of Yavapai learners achieve a successful outcome within six years.

BACKGROUND

ARIZONA COMMUNITY COLLEGES: LONG-TERM STRATEGIC VISION

In 2011 Arizona's community colleges published a long-term strategic plan, which has since been incorporated into strategic planning processes at community colleges across the state. This plan outlined a clear vision for Arizona's ten community college districts and identified 28 key indicators of progress toward 3 major goal areas: access, retention, and completion. **Many of these indicators are aligned with those included in the American Association for Community Colleges' Voluntary Framework of Accountability (VFA) initiative, which will allow for comparisons with national norms in years to come.**

A major function of the Strategic Vision is the collection, analysis, and publication of data pertaining to the 28 key indicators of progress, as well as the sharing of best practices and successful program models across the state. This document is the fifth in a series of annual reports providing data related to student progress and outcomes at Yavapai College (YC). Where available, comparable state and national data are also shown.

As 2016 represents the fifth full year of Strategic Vision data collection, the outcomes presented in this document can be compared to those from previous years, and trends in student progress and outcomes are starting to emerge. However, many external forces (such as the state of Arizona's economy, the actions of other public institutions of higher education, and the availability of funding for community colleges) also affect these trends, making long-term projections difficult at best.

The Strategic Vision, as well as a Technical Guide that provides detailed definitions of each key indicator of progress, can be found online at: www.arizonacommunitycolleges.org.

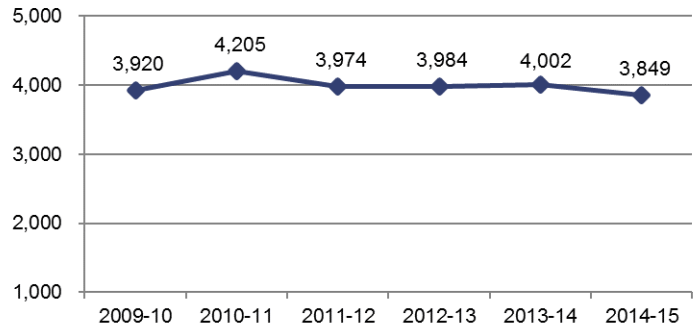
OUR VISION: Arizona's community colleges, through a collaborative effort with education, business, and community partners, will significantly increase the number of Arizonans who achieve their postsecondary education and training goals, complete a degree or certificate, and/or transfer to a university.

ACCESS INDICATORS

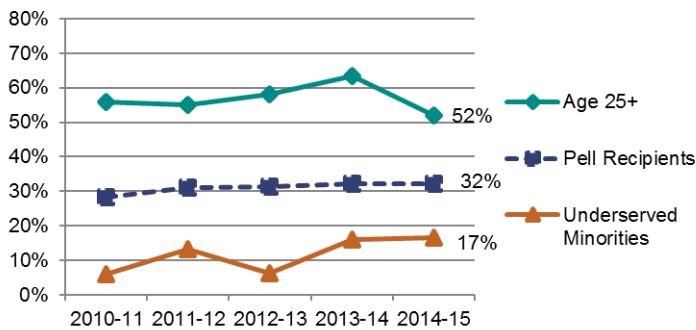
Indicator 1. Full-Time Student Equivalent (FTSE) Enrollment

Following the statewide trend, annual full-time student equivalent (FTSE) enrollment at Yavapai College has declined slightly from its high of 4,205 in 2010-11. These enrollment numbers likely reflect an improved economy drawing more students into the workplace, as well as a greater number of students enrolling directly in the state's universities and/or private institutions.

Full-Time Student Equivalent (FTSE) Enrollment



Underserved Populations, as a Percentage of Enrollment



Indicator 2. Enrollment of Underserved Populations

In 2014-15, 17% of Yavapai students were members of an underserved racial or ethnic group; 32% were Pell recipients; and 52% were over the age of 24. The latter two percentages are substantially higher than the corresponding national and statewide averages.

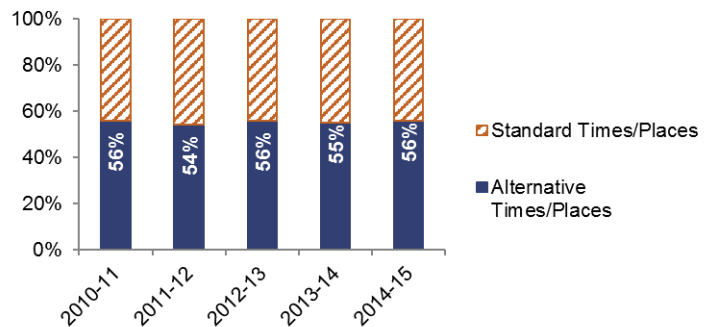
As well, the 17% of Yavapai students who were members of an underserved racial or ethnic group mirrors the percentage of those populations in Yavapai County (18 percent).¹

Indicator 3. Percent of Student Credit Hours Earned via Alternative Delivery Methods and/or at Alternative Times and Places

At Yavapai, only 44% of instruction in 2014-15 occurred in traditional semester-length classes held on campus, Monday through Friday, between the hours of 8am and 5pm.

Extending access to many diverse populations, 56% of all student credit hours were earned online, at night or on the weekends, in short-term or open-entry/open-exit courses, and in skills centers, American Indian reservations, Army bases, or prisons.

Percent of SCH Earned at Standard and Alternative Times/Places



¹U.S. Bureau of the Census. (2016). *2010-2014 American Community Survey 5-year estimates*. Washington, DC: Author.

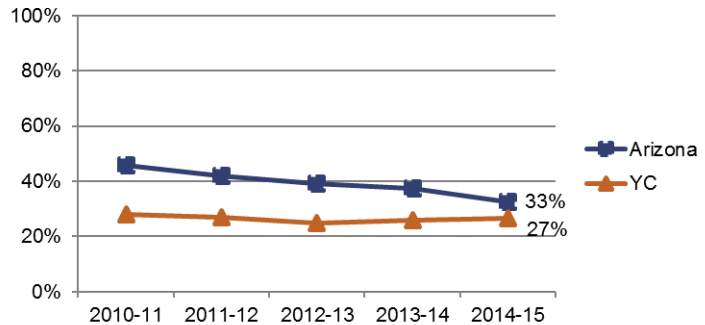
ACCESS INDICATORS

Indicators 4-5. Community College-Going Rate and Overall College-Going Rate

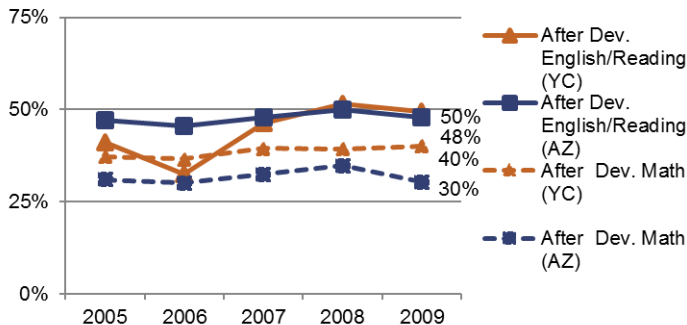
In 2014-15, Yavapai enrolled 27% of all recent high school graduates from the college's service area. The percentage of college-goers enrolling in community colleges has remained relatively steady in recent years at Yavapai but has decreased across the state.

Although not shown on the graph, Arizona's community colleges and universities together enroll 53 percent of all recent high school graduates.²

Service Area Community College-Going Rates



Success After Remediation (2005-09 New Student Cohorts)



Indicators 6-7. Success after Remediation

After six years, half of all developmental English or reading learners in Yavapai's 2009 New Student Cohort completed a college-level English course and 40% of developmental math learners in the same cohort successfully completed a college-level math course.

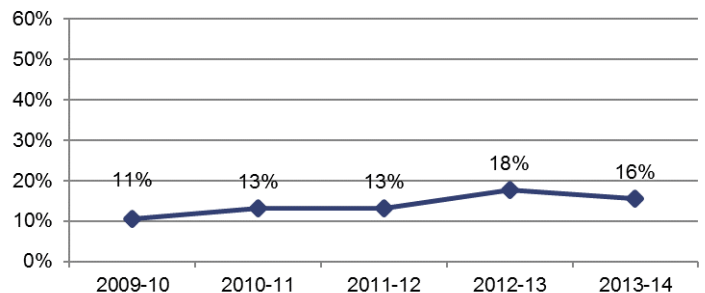
The success after developmental English/reading rate has improved substantially over the last 5 years.

Indicator 8. Cost of Attendance as a Percentage of Arizona Median Household Income

At just over \$6,800 per year, the net price of attending Yavapai College is just 16% of the median household income in Yavapai County, making the institution an excellent and affordable option for postsecondary education and training.

Yavapai College's net price is reported by the National Center for Education Statistics and is based on new full-time students.

Cost of Attendance as a Percentage of Median Household Income in Yavapai County



²Postsecondary Education Opportunity. (2016). *Chance for college by age 19 by state, 1986-2012*. Oskaloosa, IA: The Mortenson Seminar on Public Policy Analysis and Opportunity for Postsecondary Education.

RETENTION INDICATORS

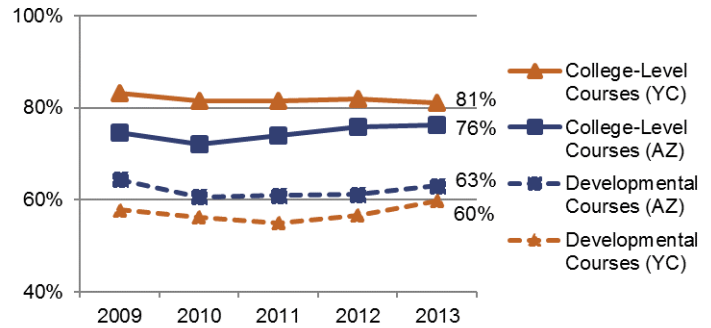
Indicators 9-10. Course Success Rates

Over two years, 81% of student credit hours attempted in college-level courses by Yavapai's 2013 New Student Cohort were successfully completed (with a grade of A, B, C, or Pass).

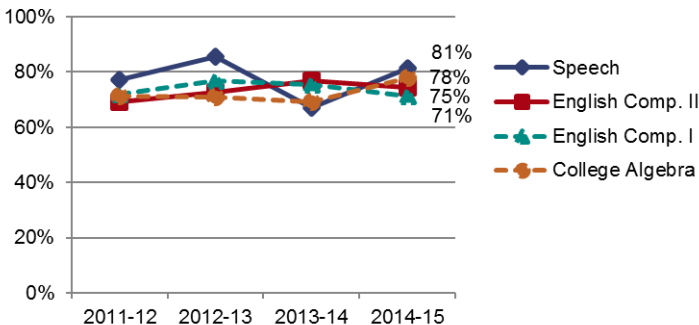
In that same time period, 60% of student credit hours attempted in developmental courses by Yavapai's 2013 New Student Cohort were successfully completed (with a grade of A, B, C, or Pass).

Although Yavapai's developmental course success rate lags behind the statewide average (63%), its college-level course success rate exceeds the statewide number (76%).

**Course Success Rates
(2009-13 New Student Cohorts)**



Percent of Gateway Math and English Credit Hours Successfully Completed



Indicator 11. Percent of Gateway (First College-Level) Math and English Credit Hours Successfully Completed

In 2014-15, between 71 and 81 percent of student credit hours attempted in College Algebra, English Composition I and II, and Speech were successfully completed (with a grade of A, B, C, or Pass).

These rates are higher than corresponding statewide averages (62%, 73%, 75%, and 78%, respectively). Yavapai will continue working to improve the percentage of its learners successfully completing gateway (first college-level) courses.

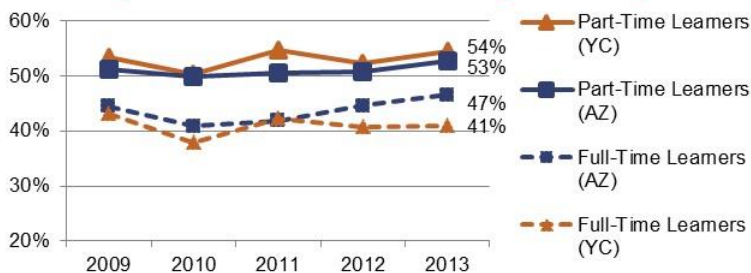
RETENTION INDICATORS

Indicator 12. Percent of Full-Time Learners Completing 42 Credits and Percent of Part-Time Learners Completing 24 Credits within Two Years

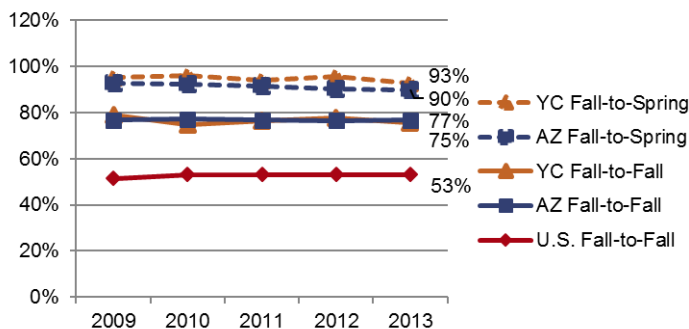
By the end of their second year, 54% of part-time learners in Yavapai's 2013 Credential-Seeking Cohort had completed 24 credits, and 41% of full-time learners in the same cohort had completed 42 credits. These rates are somewhat variable and are similar to statewide averages.

Although there is room for improvement, these rates are notable, as research has linked attainment of credit thresholds (roughly equivalent to 20 credits per year for full-time students) to higher retention and completion rates.³

Percent of Learners Reaching Credit Thresholds within Two Years (2009-13 Credential-Seeking Cohorts)



Retention Rates (2009-13 Credential-Seeking Cohorts)



Indicators 13-14. Retention Rates

Ninety-three percent of learners in Yavapai's 2013 Credential-Seeking Cohort (excluding those who successfully transferred and/or earned a degree or certificate) persisted at their college to spring 2014, and 75% of them returned for classes the following fall.

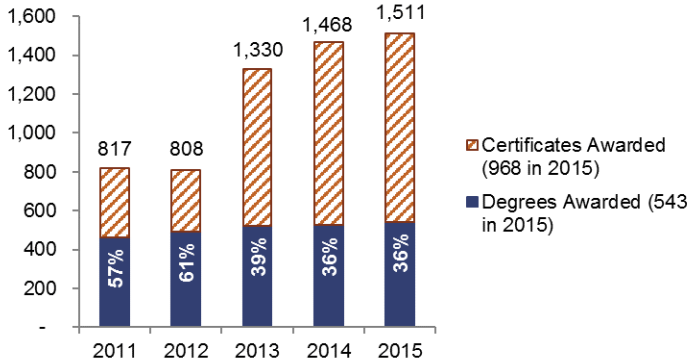
Yavapai's retention rates are similar to statewide averages, and the fall-to-fall rate is substantially higher than the 53% reported as a national comparison.⁴ However, the national number is not limited to credential-seekers. Nonetheless, national community college accountability initiatives such as the Voluntary Framework of Accountability are beginning to track and analyze retention among credential-seeking sub-cohorts, and thus more accurate national comparisons should be available in future years.

³Moore, C., Shulock, N., & Offenstien, J. (2009). *Steps to success: Analyzing milestone achievement to improve community college student outcomes*. Sacramento: California State University, Sacramento, Institute for Higher Education Leadership and Policy.

⁴NCHEMS. (2010). *Retention rates – First-time college freshmen returning their second year*. Boulder, CO: Author.

COMPLETION INDICATORS

Degrees and Certificates Awarded



Indicator 15. Number of Degrees and Certificates Awarded

Between 2011 and 2015, the number of degrees and certificates awarded by Yavapai College increased by 85 percent to 1,511 in the latter year.

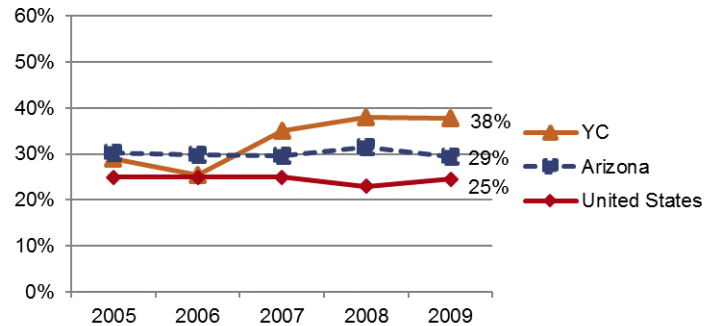
Of the 2015 total, 36% were degrees and the rest were certificates. Yavapai College is making a concerted effort to increase the number of learners earning postsecondary credentials, especially in high-demand fields.

Indicator 16. Degree/Certificate Completion Rate (Graduation Rate)

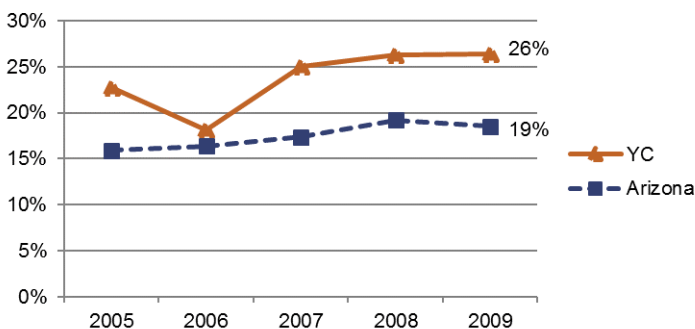
After six years, 38% of Yavapai's 2009 Credential-Seeking Cohort had completed a degree or certificate.

Yavapai's graduation rate exceeds the statewide average of 29%, and is substantially higher than the 25% reported as a national comparison,⁵ although the national number is not limited to credential-seekers. Nonetheless, the Voluntary Framework of Accountability is beginning to track and analyze completion among credential-seeking sub-cohorts, and thus more accurate national comparisons should be available in future years.

Degree/Certificate Completion Rate (2005-09 Credential-Seeking Cohorts)



AGEC Completion Rate (2005-09 Credential-Seeking Cohorts)



Indicator 17. AGEC Completion Rate

Twenty-six percent of Yavapai's 2009 Credential-Seeking Cohort completed the Arizona General Education Curriculum (AGEC) within 6 years. This rate has increased over the past few years and is substantially higher than the statewide average (19%).

Increasing AGEC completion rates—a key priority for all of Arizona's community colleges—will not only ease transfer to Arizona's public universities but should help to improve bachelor's degree completion in the state.

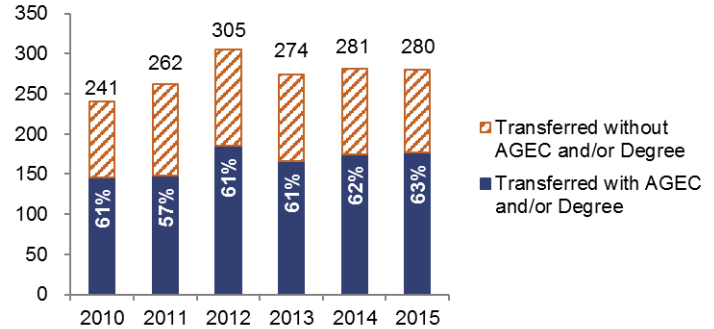
⁵U.S. Department of Education, National Center for Education Statistics. (2014). *Digest of education statistics*. Washington, DC: Author.

COMPLETION INDICATORS

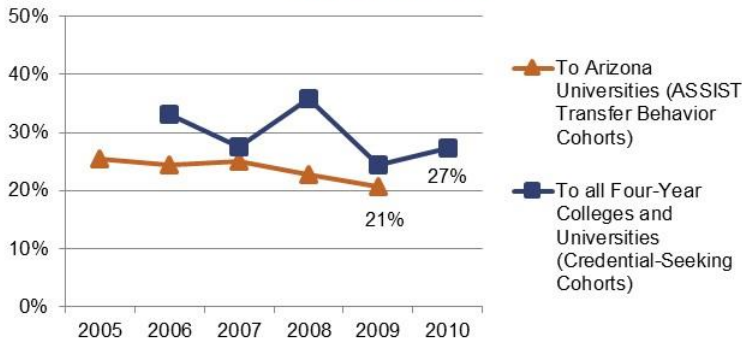
Indicators 18-19. Number of In-State University Transfers, and Percent with an AGEC and/or Degree at Time of Transfer

Between 2010 and 2015, the number of students transferring from Yavapai to an in-state, public university has increased by 16% to reach 280 in the latter year. Sixty-three percent of transfers in the 2015 cohort had earned an AGEC and/or degree prior to transferring, a sign that the transfer process is relatively efficient and cost effective for both students and the state.

Number of In-State University Transfers and Percent with AGEC and/or Degree



Transfer Rates



Indicators 20-21. In-State and Overall Transfer Rates

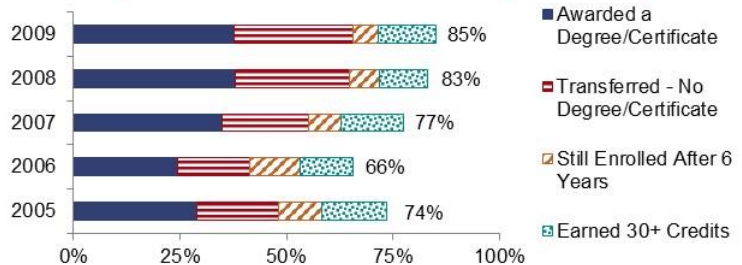
Yavapai's transfer rates among ASSIST Transfer Behavior Cohorts have fallen from 25% to 21% in recent years. The overall transfer rate (the percent of learners in Credential-Seeking Cohorts who transferred to any four-year college or university within 6 years) has also decreased from 33% to 27%, but the latter rate is higher than the most recent national transfer rate (25%) calculated by the Center for the Study of Community Colleges.⁶

Indicator 22. Percent of Learners Achieving a Successful Community College Outcome

Eighty-five percent of learners in Yavapai's 2009 Credential-Seeking Cohort achieved a successful outcome within 6 years; nearly half of these earned a degree or certificate.

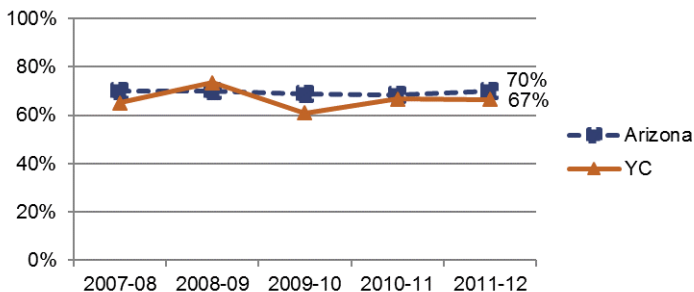
Because community college learners enter college with diverse education and training goals, and because they often attend part-time and/or earn credits from more than one community college, the VFA and other national accountability initiatives have broadened the definition of a successful community college outcome to include: earning a degree or certificate; transferring to another two- or four-year college or university; continued enrollment; and/or leaving the institution after earning 30 or more credits.

Percent of Learners Achieving a Successful Outcome (2005-09 Credential-Seeking Cohorts)



COMPLETION INDICATORS

Percent of Full-Time Transfers to Arizona Universities Earning a Bachelor's Degree within Four Years



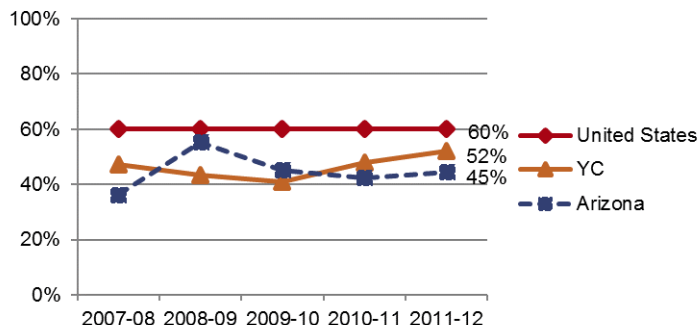
Indicator 23. Percent of Full-Time Transfers to Arizona Public Universities who Earn a Bachelor's Degree within Four Years

Sixty-seven percent of all 2011-12 full-time transfers from Yavapai College to in-state universities earned a bachelor's degree within four years. While slightly lower than the statewide average (70%), this rate indicates that most full-time transfers from Yavapai are graduating from the state's public universities in a timely manner.

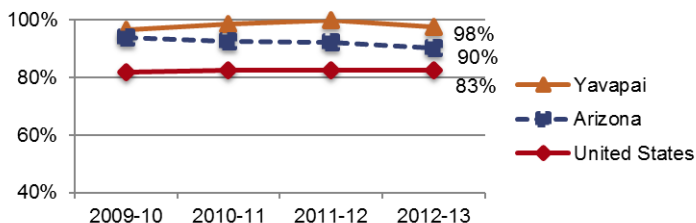
Indicator 24. Percent of all Transfers who Earn a Bachelor's Degree within Four Years

Fifty-two percent of 2011-12 transfers from Yavapai to all four-year institutions—public and private, in-state and out—earned a bachelor's degree within four years. Although higher than the statewide average (43%), this rate is somewhat lower than the national number (60%)⁷ and may reflect a high incidence of part-time attendance after transfer.

Percent of all Transfers Earning a Bachelor's Degree within Four Years



Percent of Learners Earning an Industry-Recognized Credential (2009-13 Occupational Completers/Leavers)



Indicator 25. Percent of Occupational Program Completers/Leavers Earning an Industry-Recognized Credential within One Year

Out of all learners in Yavapai's 2012-13 Occupational Completers/Leavers Cohort who took a technical skill or end-of-program assessment aligned with industry-recognized standards up to one year after college exit, 98% passed the assessment and/or earned an industry-recognized credential. This level of performance exceeds the 2011-12 national average of 83%.⁸

Examples of occupational programs leading to industry-recognized credentials include, among others, aviation technology, building and construction, dental hygiene, education, emergency medical technician, fashion, fire science, nursing, solar technologies, and veterinary technologies.

⁷National Student Clearinghouse. (2012). *Snapshot report: transfer outcomes (four years after transfer)*. Herndon, VA: Author.

⁸Perkins Collaborative Resource Network. (2014). *Core indicator report :1P1 Technical Skill Attainment , 2011-12*.

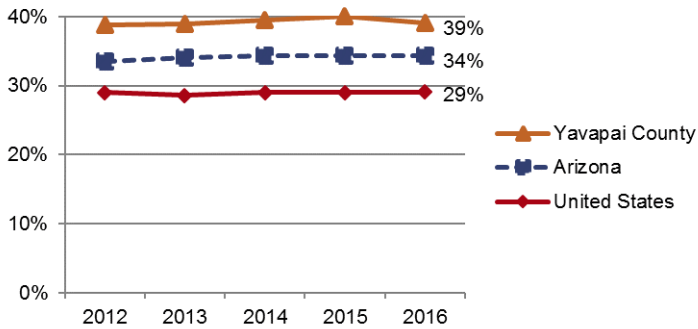
Washington, DC: Author.

COMPLETION INDICATORS

Indicator 26. Wage Growth of Occupational Completers

This indicator will be incorporated into the Strategic Vision pending a statewide agreement for sharing wage data.

Percent of Adults with Some College or an Associate Degree



Indicator 27. Percent of Adults with Some College or an Associate Degree

Thirty-nine percent of Yavapai County adults age 25 and older have attended some college and/or have earned an associate degree.

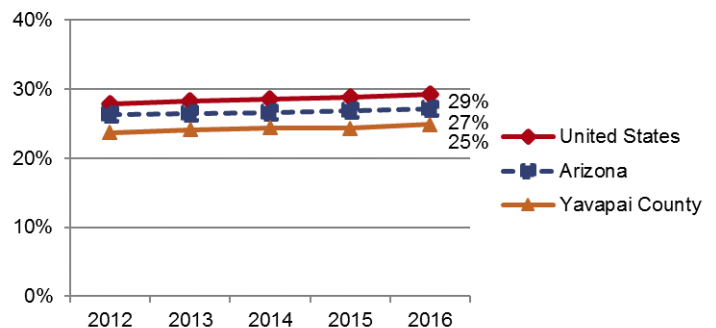
This rate exceeds the statewide average (34%) and is substantially higher than the national number (29%).⁹

Indicator 28. Percent of Adults with a Bachelor's or Higher Degree

Only 25 percent of adults in Yavapai County hold a bachelor's or higher degree, compared to 27% statewide and 29% nationally.⁹

By continuing to provide education leading to transfer and bachelor's degrees, and by partnering with the state's public universities, Yavapai and other community colleges across the state are well on their way toward helping the Arizona Board of Regents reach their goal of raising the percentage of Arizona adults holding a bachelor's degree to 28% by 2017.

Percent of Adults with a Bachelor's or Higher Degree



⁹U.S. Bureau of the Census. (2016). Educational attainment for the population 25 years and older: 2010-2014 American Community Survey 5-year estimates. Washington, DC: Author.