

## YAVAPAI COLLEGE FACILITIES MANAGEMENT NEWS

January 2021

Happy New Year from Facilities!

Facilities Management office hours at both the Prescott and Verde Valley campuses are limited to appointment only in accordance with Phase Red protocol. To make an appointment for either office, please call 776-2180 or send an email to [facilities@yc.edu](mailto:facilities@yc.edu). Individual Facilities Management team members can still be contacted through their YC email account. Thank you!

### January Newsletter

The January issue of this newsletter contains the latest information related to Facilities Management programs and projects, along with general information concerning the campus master plan and subsequent capital improvements. If you have questions about any of the items listed, please email me at [david.laurence@yc.edu](mailto:david.laurence@yc.edu). This newsletter is also posted on the Facilities website.

### Campus Projects

#### Chino Valley Agribusiness Center - Construction Building Technology Utility Services

Facilities Management will be assisting the new 3D house printing project by providing electrical, data, and water services to the construction site supporting up to three houses. In addition, the plan is to use the Chino Ag Center location to showcase the abilities of this new program. For more information about this exciting program, please contact John Morgan, Curtis Freeman, or Max Bledsoe.



Future location of 3D printed houses

### Prescott Campus Parking Lot Lighting Upgrade

New fixtures for LED lighting have been ordered and will be installed from February through May. The existing metal halide and high-pressure sodium lights will be replaced with LED with an expected 80% reduction in energy consumption along with better illumination. Since the Prescott campus has the largest parking lot, this location will receive the upgrade first, followed by the Verde Valley Campus and the centers.

Project Manager: James Crockett

### Prescott Campus Practice Field

The practice field is complete, including the placement of a new equipment shed. The playing surface is not ready yet since the new sod has not taken root with the cold weather.

Contractor: ZebraScapes Landscaping

Project Manager: Mike Kervin



Riprap along the perimeter of the field

## Verde Valley Campus Greenhouse

Assembly of the new greenhouse is underway as components arrive on site. The greenhouse is expected to be complete by January 15, 2021. The location of this new 18' x 48' unit is between Buildings A and G.

Contractor: Loven Contracting

Project Manager: Mike Kervin



# 2019-20 CAPITAL IMPROVEMENT PLAN

## Verde Valley Skilled Trades Center

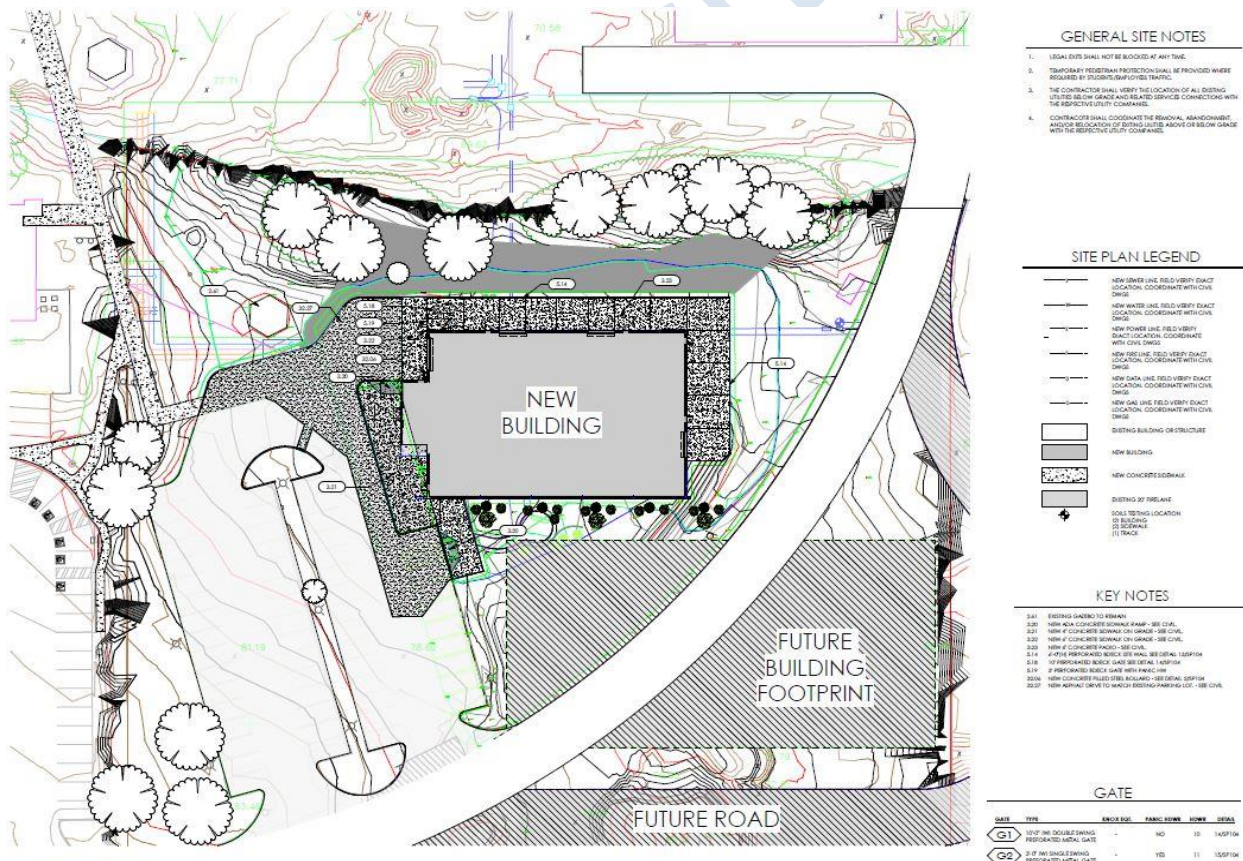
The engineered building is ordered with anticipated delivery in late January 2021. The building's interior is in the final design stage after the second user group meeting with John Morgan, Dr. Tina Redd, Heather Mulcaire, and Bob Weir (representing Valley Academy for Career and Technical Education).

The utility location is complete in preparation for excavation and site work. It is anticipated that earthwork will begin in early January, and building erection beginning at the end of January. The goal is to have the building ready for students for the 2021 fall semester.

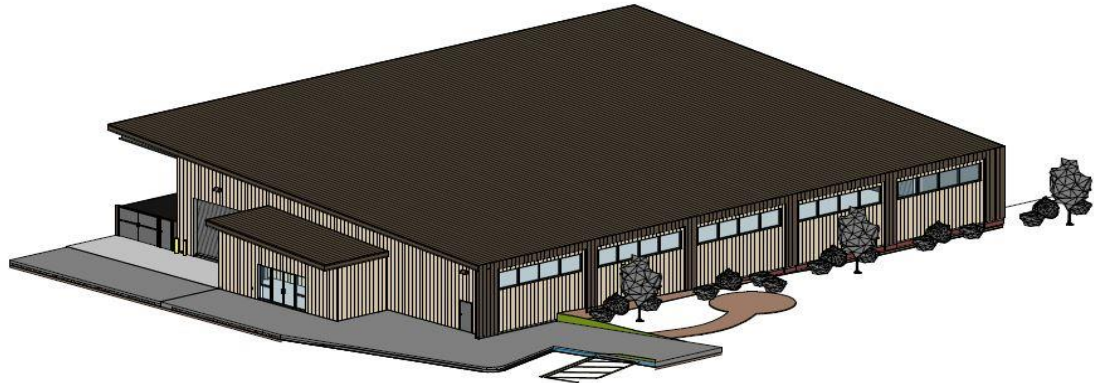
The Verde Valley Skilled Trades Center is designed to support CTE programs for Residential Construction, Residential Electrical, HVAC, and Plumbing. The building will be approximately 10,000 square feet of shop space with restrooms and faculty offices. There will also be covered exterior space for additional activities associated with these programs.

Design Team: SPS+ Architects

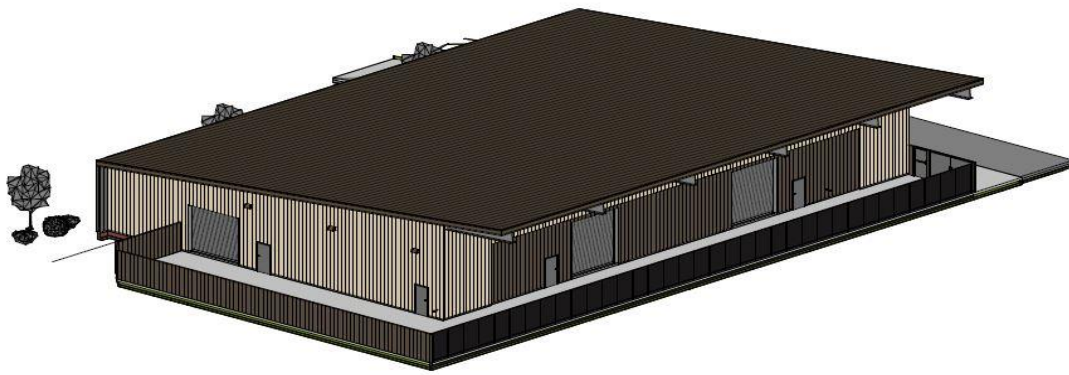
Construction Team: McCarthy Building Systems



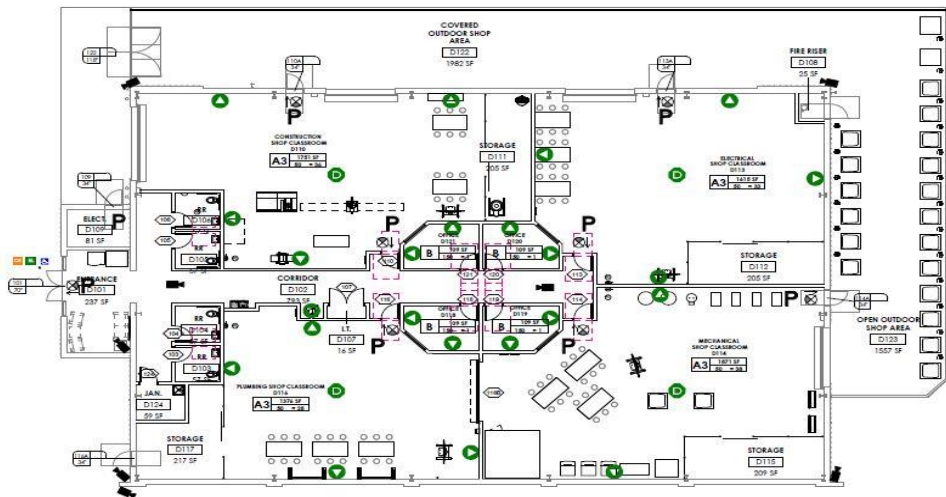
Planned location of the new Verde Valley Skilled Trades Center (Building D) showing possible phase 2 location



AXION 1 SW



AXION 2 NE



CODE PLAN - LEVEL 1

CODE PLAN LEGEND

- TRAVEL DISTANCE INDICATED ARE FROM MOST REMOTE POINT TO EXTERIOR THIS PATH INDICATES TOTAL TRAVEL DISTANCE INCLUDE THE COMMON PATH OF TRAVEL DISTANCE
- REQUIRES SET PANIC HARDWARE OR DOOR RELEASED DURING BUSINESS HOURS (PROVIDES) A NUMBER OF OCCUPANTS
- COMMON PATH OF TRAVEL/TOTAL TRAVEL DISTANCE
- ROOM NAME
- ROOM NUMBER
- ROOM AREA
- MARK OCCUPANT LOAD
- OCCUPANCY LOAD FACTOR
- OCCUPANCY TYPE
- DOOR NUMBER
- OCCUPANT LOAD
- REQUIRES SIGNS WITHIN
- DOORS PROVIDED SIGNS WITHIN
- TACTILE EXIT SIGN (LOCATED AT 48" ABOVE THE FINISH FLOOR TO THE CENTER OF THE SIGN)
- MANUALLY OPERATED SPACE REQUIREMENTS AT EACH DOOR PER OCCUPANTS AT 113
- PARTIALLY RECESSED FIRE EXTINGUISHER AND CAMEL
- WOLF REARER RIGHT
- HOPKINSON BUTTON/CRANK
- EXIT SIGN (SEE ELECTRICAL)
- KNOX BOX
- SMALL ASSEMBLY SPACE CLASSIFIED AS A TYP OCCUPANCY
- INCIDENTAL TYP MECHANICAL
- TYP OFFICE OCCUPANCY
- OCCUPANT LOAD FACTOR
- GROSS SQUARE FOOT
- NET SQUARE FOOT

HARDWARE LEGEND

- CARD READER
- ELECTRIC LATCH RETRACTION
- AUTO OPERATOR
- CAMERA
- DATA CUBING
- DATA WALL
- PANIC HARDWARE

TRAVEL PATH DISTANCE	
Path ID	Travel Distance

Verde Valley Skilled Trades Center Layout

## Building 16 Technical Theater

At the time of writing this edition of this newsletter, the bids are under review with a decision to award expected the first week of January 2021. Assuming an award is made to the lowest responsible bidder, construction will begin in mid-January 2021.

Stay tuned for more information as this project progresses.

If you would like more information about the campus master plan or implementation schedule, please go to <http://masterplan.yc.edu/>. This site is updated regularly as new information concerning project progress becomes available.

## **BUILDINGS AND GROUNDS PLANNED MAINTENANCE PROJECTS**

As part of the budget, planned maintenance projects are scheduled each year to ensure that College facilities are maintained at a level to support optimum performance in building systems, infrastructure, life safety, roadways, and parking, along with College grounds. These projects are the result of a recent Facilities Condition Assessment (FCA), which identifies when repairs, modifications, or replacement of components should occur.

FCA Projects:

Kachina South Wing Plumbing and Fire Safety Upgrades – Complete

PAC HVAC and Roof Replacement – In design, construction anticipated to begin in Spring 2021

## **Energy Corner – Scott Blevins**

Did you know?

- Indoor lighting use is highest during the daytime hours of 9-5. An odd fact when you consider that light bulbs were invented so we could see in the dark.
- According to the EPA, 25 to 30 percent of a building's energy bill goes to lighting.
- Use only as much lighting as you need. Many classrooms have the option of turning on multiple rows of lights, but you might only need one or two.
- On sunny days, take advantage of natural light!
- Keep shades open or closed to either allow sunlight to heat during winter or prevent heating during summer.
- Always remember to turn the lights off when you leave.

## **Environmental, Health and Safety – Angie Gasser**

### COVID-19 Vaccine

Yavapai College will be partnering with Yavapai County Health Department to offer the Moderna vaccine. This vaccination consists of two shots, 28 days apart. Initial vaccine supplies are limited, which is why the vaccine is being offered in different phases based on those at highest risk. Yavapai College plans to schedule on-site vaccination appointments later this month once we receive more information from the county. For more information about the Moderna vaccine, please visit the Yavapai County COVID-19 FAQ site:

<https://www.yavapai.us/Portals/39/COVID-19/COVID-19VaccineFAQs.pdf>

### **Facilities New Team Members**

There are no new team members this month. Facilities is still looking to replace a Technician III, Painter.

Well, that is all for this edition of Yavapai College Facilities Management News. Please stay tuned for the next edition containing the latest information related to projects and programs around the College.

We here at Facilities look forward to seeing you on campus soon in 2021!